

# LME Valuation - Copper

Cash - 3M: 132.10c

Date: 2024-04-11

	Cash	3M	Apr24	May24	Jun24	Jul24	Aug24	Sep24	Oct24	Nov24	Dec24	Jan25	Feb25	Mar25	Apr25
Cash	9209.90	9342.00													
3M															
Apr24	9213.40														
May24	9260.69														
Jun24	9311.05														
Jul24	9350.17														
Aug24	9389.67														
Sep24	9422.17														
Oct24	9451.17														
Nov24	9480.17														
Dec24	9501.17														
Jan25	9518.17														
Feb25	9534.24														
Mar25	9544.17														
Apr25	9555.67														

	Cash-Apr24	Cash-May24	Cash-Jun24	Cash-Jul24	Cash-Aug24	Cash-Sep24	Cash-Oct24	Cash-Nov24	Cash-Dec24	Cash-Jan25	Cash-Feb25	Cash-Mar25
Cash	3.50c	50.79c	101.15c	140.27c	179.77c	212.27c	241.27c	270.27c	291.27c	308.27c	324.34c	334.27c

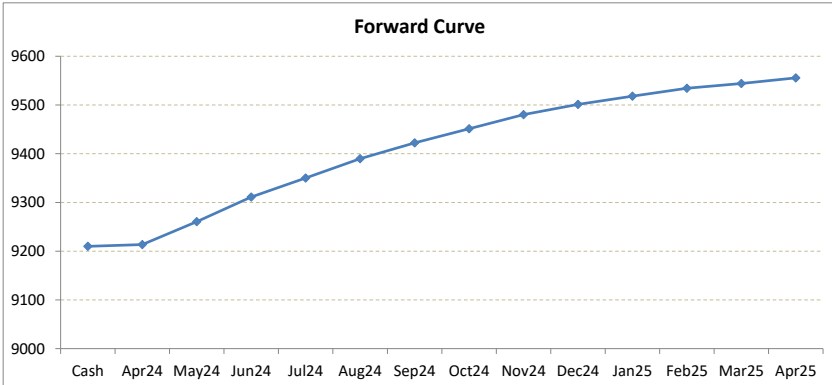
	Apr24-3M	May24-3M	Jun24-3M	3M-Jul24	3M-Aug24	3M-Sep24	3M-Oct24	3M-Nov24	3M-Dec24	3M-Jan25	3M-Feb25	3M-Mar25
3M	128.60c	81.31c	30.95c	8.17c	47.67c	80.17c	109.17c	138.17c	159.17c	176.17c	192.24c	202.17c

	Apr24-May24	May24-Jun24	Jun24-Jul24	Jul24-Aug24	Aug24-Sep24	Sep24-Oct24	Oct24-Nov24	Nov24-Dec24	Dec24-Jan25	Jan25-Feb25	Feb25-Mar25	Mar25-Apr25
3rd wed	47.29c	50.36c	39.12c	39.50c	32.50c	29.00c	29.00c	21.00c	17.00c	16.07c	9.93c	11.50c

	May24	Jun24	Jul24	Aug24	Sep24	Oct24	Nov24	Dec24	Jan25	Feb25	Mar25	Apr25
Apr24	47.29c	97.65c	136.77c	176.27c	208.77c	237.77c	266.77c	287.77c	304.77c	320.84c	330.77c	342.27c
	May24	50.36c	89.48c	128.98c	161.48c	190.48c	219.48c	240.48c	257.48c	273.55c	283.48c	294.98c
		Jun24	39.12c	78.62c	111.12c	140.12c	169.12c	190.12c	207.12c	223.19c	233.12c	244.62c
			Jul24	39.50c	72.00c	101.00c	130.00c	151.00c	168.00c	184.07c	194.00c	205.50c
				Aug24	32.50c	61.50c	90.50c	111.50c	128.50c	144.57c	154.50c	166.00c
					Sep24	29.00c	58.00c	79.00c	96.00c	112.07c	122.00c	133.50c
						Oct24	29.00c	50.00c	67.00c	83.07c	93.00c	104.50c
							Nov24	21.00c	38.00c	54.07c	64.00c	75.50c
								Dec24	17.00c	33.07c	43.00c	54.50c
									Jan25	16.07c	26.00c	37.50c
										Feb25	9.93c	21.43c
											Mar25	11.50c
												Apr25



\*본 자료는 LME에서 공시하는 Valuation을 토대로 작성된 것으로 실제 거래 시의 스프레드와는 무관합니다.  
 \*\* Source: Reuters

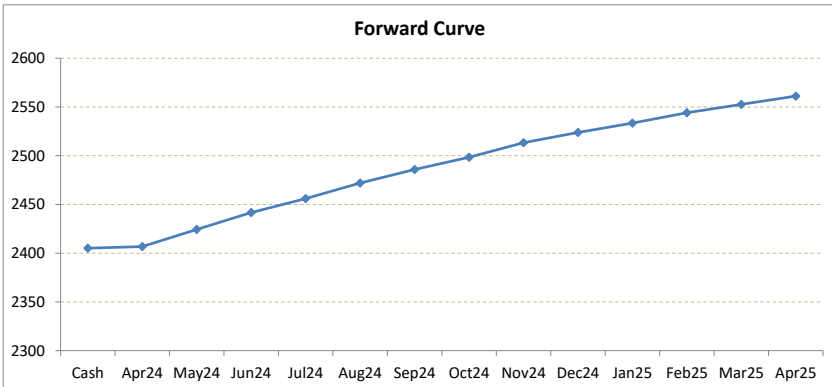


# LME Valuation - Aluminium

Cash - 3M: 48.90c

Date: 2024-04-11

	Cash	3M	Apr24	May24	Jun24	Jul24	Aug24	Sep24	Oct24	Nov24	Dec24	Jan25	Feb25	Mar25	Apr25
<b>Cash</b>	<b>2405.10</b>														
<b>3M</b>	<b>2454.00</b>														
Apr24	<b>2406.83</b>														
May24	<b>2424.38</b>														
Jun24	<b>2441.70</b>														
Jul24	<b>2455.93</b>														
Aug24	<b>2471.93</b>														
Sep24	<b>2485.93</b>														
Oct24	<b>2498.43</b>														
Nov24	<b>2513.43</b>														
Dec24	<b>2523.93</b>														
Jan25	<b>2533.43</b>														
Feb25	<b>2544.18</b>														
Mar25	<b>2552.68</b>														
Apr25	<b>2561.18</b>														
		Cash-Apr24	Cash-May24	Cash-Jun24	Cash-Jul24	Cash-Aug24	Cash-Sep24	Cash-Oct24	Cash-Nov24	Cash-Dec24	Cash-Jan25	Cash-Feb25	Cash-Mar25		
Cash		1.73c	19.28c	36.60c	50.83c	66.83c	80.83c	93.33c	108.33c	118.83c	128.33c	139.08c	147.58c		
		Apr24-3M	May24-3M	Jun24-3M	3M-Jul24	3M-Aug24	3M-Sep24	3M-Oct24	3M-Nov24	3M-Dec24	3M-Jan25	3M-Feb25	3M-Mar25		
3M		47.17c	29.62c	12.30c	1.93c	17.93c	31.93c	44.43c	59.43c	69.93c	79.43c	90.18c	98.68c		
		Apr24-May24	May24-Jun24	Jun24-Jul24	Jul24-Aug24	Aug24-Sep24	Sep24-Oct24	Oct24-Nov24	Nov24-Dec24	Dec24-Jan25	Jan25-Feb25	Feb25-Mar25	Mar25-Apr25		
3rd wed		17.55c	17.32c	14.23c	16.00c	14.00c	12.50c	15.00c	10.50c	9.50c	10.75c	8.50c	8.50c		
		May24	Jun24	Jul24	Aug24	Sep24	Oct24	Nov24	Dec24	Jan25	Feb25	Mar25	Apr25		
Apr24		17.55c	34.87c	49.10c	65.10c	79.10c	91.60c	106.60c	117.10c	126.60c	137.35c	145.85c	154.35c		
		May24	Jun24	Jul24	Aug24	Sep24	Oct24	Nov24	Dec24	Jan25	Feb25	Mar25	Apr25		
			17.32c	31.55c	47.55c	61.55c	74.05c	89.05c	99.55c	109.05c	119.80c	128.30c	136.80c		
			Jun24	Jul24	Aug24	Sep24	Oct24	Nov24	Dec24	Jan25	Feb25	Mar25	Apr25		
				14.23c	30.23c	44.23c	56.73c	71.73c	82.23c	91.73c	102.48c	110.98c	119.48c		
				Jul24	Aug24	Sep24	Oct24	Nov24	Dec24	Jan25	Feb25	Mar25	Apr25		
					16.00c	30.00c	42.50c	57.50c	68.00c	77.50c	88.25c	96.75c	105.25c		
					Aug24	Sep24	Oct24	Nov24	Dec24	Jan25	Feb25	Mar25	Apr25		
						14.00c	26.50c	41.50c	52.00c	61.50c	72.25c	80.75c	89.25c		
						Sep24	Oct24	Nov24	Dec24	Jan25	Feb25	Mar25	Apr25		
							12.50c	27.50c	38.00c	47.50c	58.25c	66.75c	75.25c		
							Oct24	Nov24	Dec24	Jan25	Feb25	Mar25	Apr25		
								15.00c	25.50c	35.00c	45.75c	54.25c	62.75c		
								Nov24	Dec24	Jan25	Feb25	Mar25	Apr25		
									10.50c	20.00c	30.75c	39.25c	47.75c		
									Dec24	Jan25	Feb25	Mar25	Apr25		
										9.50c	20.25c	28.75c	37.25c		
										Jan25	Feb25	Mar25	Apr25		
											10.75c	19.25c	27.75c		
											Feb25	Mar25	Apr25		
												8.50c	17.00c		
												Mar25	Apr25		
													8.50c		
														Apr25	



\*본 자료는 LME에서 공시하는 Valuation을 토대로 작성된 것으로 실제 거래 시의 스프레드와는 무관합니다.  
 \*\* Source: Reuters



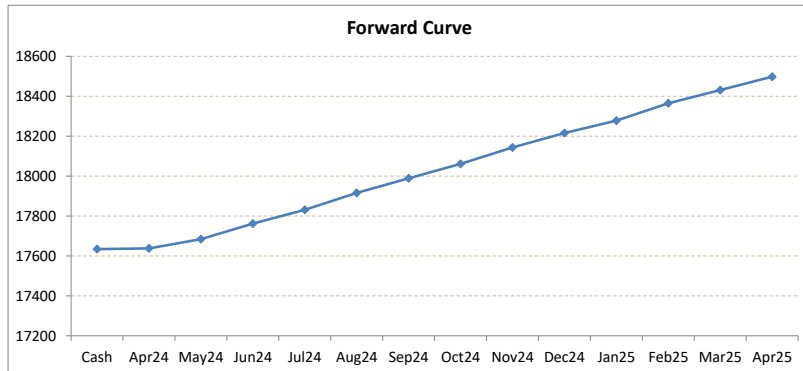
# LME Valuation - Nickel

Cash - 3M: 176.88c

Date: 2024-04-11

**Cash 17634.12**  
**3M 17811.00**  
 Apr24 **17637.97**  
 May24 **17684.18**  
 Jun24 **17762.14**  
 Jul24 **17830.83**  
 Aug24 **17915.83**  
 Sep24 **17988.84**  
 Oct24 **18061.00**  
 Nov24 **18143.00**  
 Dec24 **18216.00**  
 Jan25 **18278.00**  
 Feb25 **18365.00**  
 Mar25 **18431.00**  
 Apr25 **18498.00**

	Cash-Apr24	Cash-May24	Cash-Jun24	Cash-Jul24	Cash-Aug24	Cash-Sep24	Cash-Oct24	Cash-Nov24	Cash-Dec24	Cash-Jan25	Cash-Feb25	Cash-Mar25
Cash	3.85c	50.06c	128.02c	196.71c	281.71c	354.72c	426.88c	508.88c	581.88c	643.88c	730.88c	796.88c
	Apr24-3M	May24-3M	Jun24-3M	3M-Jul24	3M-Aug24	3M-Sep24	3M-Oct24	3M-Nov24	3M-Dec24	3M-Jan25	3M-Feb25	3M-Mar25
3M	173.03c	126.82c	48.86c	19.83c	104.83c	177.84c	250.00c	332.00c	405.00c	467.00c	554.00c	620.00c
	Apr24-May24	May24-Jun24	Jun24-Jul24	Jul24-Aug24	Aug24-Sep24	Sep24-Oct24	Oct24-Nov24	Nov24-Dec24	Dec24-Jan25	Jan25-Feb25	Feb25-Mar25	Mar25-Apr25
3rd wed	46.21c	77.96c	68.69c	85.00c	73.01c	72.16c	82.00c	73.00c	62.00c	87.00c	66.00c	67.00c
	May24	Jun24	Jul24	Aug24	Sep24	Oct24	Nov24	Dec24	Jan25	Feb25	Mar25	Apr25
Apr24	46.21c	124.17c	192.86c	277.86c	350.87c	423.03c	505.03c	578.03c	640.03c	727.03c	793.03c	860.03c
	May24	Jun24	Jul24	Aug24	Sep24	Oct24	Nov24	Dec24	Jan25	Feb25	Mar25	Apr25
May24	77.96c	146.65c	231.65c	304.66c	376.82c	458.82c	531.82c	593.82c	680.82c	746.82c	813.82c	
	Jun24	Jul24	Aug24	Sep24	Oct24	Nov24	Dec24	Jan25	Feb25	Mar25	Apr25	
Jun24	68.69c	153.69c	226.70c	298.86c	380.86c	453.86c	515.86c	602.86c	668.86c	735.86c		
	Jul24	Aug24	Sep24	Oct24	Nov24	Dec24	Jan25	Feb25	Mar25	Apr25		
Jul24	85.00c	158.01c	230.17c	312.17c	385.17c	447.17c	534.17c	600.17c	667.17c			
	Aug24	Sep24	Oct24	Nov24	Dec24	Jan25	Feb25	Mar25	Apr25			
Aug24	73.01c	145.17c	227.17c	300.17c	362.17c	449.17c	515.17c	582.17c				
	Sep24	Oct24	Nov24	Dec24	Jan25	Feb25	Mar25	Apr25				
Sep24	72.16c	154.16c	227.16c	289.16c	376.16c	442.16c	509.16c					
	Oct24	Nov24	Dec24	Jan25	Feb25	Mar25	Apr25					
Oct24	82.00c	155.00c	217.00c	304.00c	370.00c	437.00c						
	Nov24	Dec24	Jan25	Feb25	Mar25	Apr25						
Nov24	73.00c	135.00c	222.00c	288.00c	355.00c							
	Dec24	Jan25	Feb25	Mar25	Apr25							
Dec24	62.00c	149.00c	215.00c	282.00c								
	Jan25	Feb25	Mar25	Apr25								
Jan25	87.00c	153.00c	220.00c									
	Feb25	Mar25	Apr25									
Feb25	66.00c	133.00c										
	Mar25	Apr25										
Mar25	67.00c											
	Apr25											
Apr25												



\*본 자료는 LME에서 공시하는 Valuation을 토대로 작성된 것으로 실제 거래 시의 스프레드와는 무관합니다.

\*\* Source: Reuters



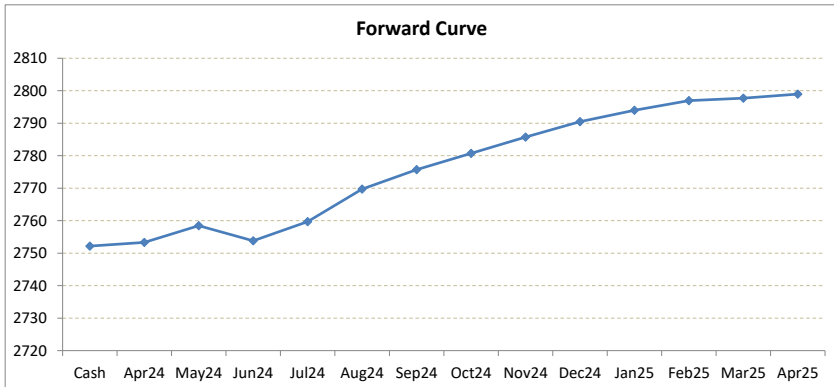
# LME Valuation - Zinc

Cash - 3M: 6.32c

Date: 2024-04-11

**Cash 2752.18**  
**3M 2758.50**  
 Apr24 **2753.31**  
 May24 **2758.47**  
 Jun24 **2753.79**  
 Jul24 **2759.72**  
 Aug24 **2769.72**  
 Sep24 **2775.72**  
 Oct24 **2780.72**  
 Nov24 **2785.72**  
 Dec24 **2790.47**  
 Jan25 **2793.97**  
 Feb25 **2796.97**  
 Mar25 **2797.72**  
 Apr25 **2798.97**

	Cash-Apr24	Cash-May24	Cash-Jun24	Cash-Jul24	Cash-Aug24	Cash-Sep24	Cash-Oct24	Cash-Nov24	Cash-Dec24	Cash-Jan25	Cash-Feb25	Cash-Mar25
Cash	1.13c	6.29c	1.61c	7.54c	17.54c	23.54c	28.54c	33.54c	38.29c	41.79c	44.79c	45.54c
	Apr24-3M	May24-3M	Jun24-3M	3M-Jul24	3M-Aug24	3M-Sep24	3M-Oct24	3M-Nov24	3M-Dec24	3M-Jan25	3M-Feb25	3M-Mar25
3M	5.19c	0.03c	4.71c	1.22c	11.22c	17.22c	22.22c	27.22c	31.97c	35.47c	38.47c	39.22c
	Apr24-May24	May24-Jun24	Jun24-Jul24	Jul24-Aug24	Aug24-Sep24	Sep24-Oct24	Oct24-Nov24	Nov24-Dec24	Dec24-Jan25	Jan25-Feb25	Feb25-Mar25	Mar25-Apr25
3rd wed	5.16c	4.68b	5.93c	10.00c	6.00c	5.00c	5.00c	4.75c	3.50c	3.00c	0.75c	1.25c
	May24	Jun24	Jul24	Aug24	Sep24	Oct24	Nov24	Dec24	Jan25	Feb25	Mar25	Apr25
Apr24	5.16c	0.48c	6.41c	16.41c	22.41c	27.41c	32.41c	37.16c	40.66c	43.66c	44.41c	45.66c
	May24	Jun24	Jul24	Aug24	Sep24	Oct24	Nov24	Dec24	Jan25	Feb25	Mar25	Apr25
May24		4.68b	1.25c	11.25c	17.25c	22.25c	27.25c	32.00c	35.50c	38.50c	39.25c	40.50c
Jun24			5.93c	15.93c	21.93c	26.93c	31.93c	36.68c	40.18c	43.18c	43.93c	45.18c
Jul24				10.00c	16.00c	21.00c	26.00c	30.75c	34.25c	37.25c	38.00c	39.25c
Aug24					6.00c	11.00c	16.00c	20.75c	24.25c	27.25c	28.00c	29.25c
Sep24						5.00c	10.00c	14.75c	18.25c	21.25c	22.00c	23.25c
Oct24							5.00c	9.75c	13.25c	16.25c	17.00c	18.25c
Nov24								4.75c	8.25c	11.25c	12.00c	13.25c
Dec24									3.50c	6.50c	7.25c	8.50c
Jan25										3.00c	3.75c	5.00c
Feb25											0.75c	2.00c
Mar25												1.25c
Apr25												



\*본 자료는 LME에서 공시하는 Valuation을 토대로 작성된 것으로 실제 거래 시의 스프레드와는 무관합니다.  
 \*\* Source: Reuters



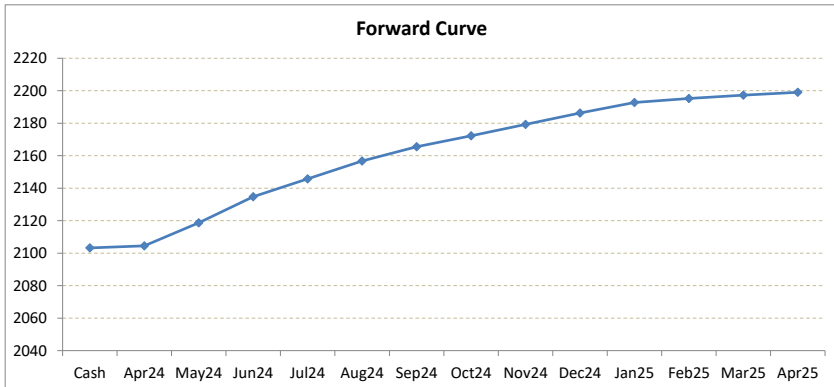
# LME Valuation - Lead

Cash - 3M: 39.76c

Date: 2024-04-11

**Cash 2103.24**  
**3M 2143.00**  
 Apr24 **2104.54**  
 May24 **2118.69**  
 Jun24 **2134.76**  
 Jul24 **2145.79**  
 Aug24 **2156.79**  
 Sep24 **2165.54**  
 Oct24 **2172.29**  
 Nov24 **2179.29**  
 Dec24 **2186.29**  
 Jan25 **2192.79**  
 Feb25 **2195.29**  
 Mar25 **2197.29**  
 Apr25 **2199.04**

	Cash-Apr24	Cash-May24	Cash-Jun24	Cash-Jul24	Cash-Aug24	Cash-Sep24	Cash-Oct24	Cash-Nov24	Cash-Dec24	Cash-Jan25	Cash-Feb25	Cash-Mar25
Cash	1.30c	15.45c	31.52c	42.55c	53.55c	62.30c	69.05c	76.05c	83.05c	89.55c	92.05c	94.05c
	Apr24-3M	May24-3M	Jun24-3M	3M-Jul24	3M-Aug24	3M-Sep24	3M-Oct24	3M-Nov24	3M-Dec24	3M-Jan25	3M-Feb25	3M-Mar25
3M	38.46c	24.31c	8.24c	2.79c	13.79c	22.54c	29.29c	36.29c	43.29c	49.79c	52.29c	54.29c
	Apr24-May24	May24-Jun24	Jun24-Jul24	Jul24-Aug24	Aug24-Sep24	Sep24-Oct24	Oct24-Nov24	Nov24-Dec24	Dec24-Jan25	Jan25-Feb25	Feb25-Mar25	Mar25-Apr25
3rd wed	14.15c	16.07c	11.03c	11.00c	8.75c	6.75c	7.00c	7.00c	6.50c	2.50c	2.00c	1.75c
	May24	Jun24	Jul24	Aug24	Sep24	Oct24	Nov24	Dec24	Jan25	Feb25	Mar25	Apr25
Apr24	14.15c	30.22c	41.25c	52.25c	61.00c	67.75c	74.75c	81.75c	88.25c	90.75c	92.75c	94.50c
	May24	16.07c	27.10c	38.10c	46.85c	53.60c	60.60c	67.60c	74.10c	76.60c	78.60c	80.35c
		Jun24	11.03c	22.03c	30.78c	37.53c	44.53c	51.53c	58.03c	60.53c	62.53c	64.28c
			Jul24	11.00c	19.75c	26.50c	33.50c	40.50c	47.00c	49.50c	51.50c	53.25c
				Aug24	8.75c	15.50c	22.50c	29.50c	36.00c	38.50c	40.50c	42.25c
					Sep24	6.75c	13.75c	20.75c	27.25c	29.75c	31.75c	33.50c
						Oct24	7.00c	14.00c	20.50c	23.00c	25.00c	26.75c
							Nov24	7.00c	13.50c	16.00c	18.00c	19.75c
								Dec24	6.50c	9.00c	11.00c	12.75c
									Jan25	2.50c	4.50c	6.25c
										Feb25	2.00c	3.75c
											Mar25	1.75c
												Apr25



\*본 자료는 LME에서 공시하는 Valuation을 토대로 작성된 것으로 실제 거래 시의 스프레드와는 무관합니다.  
 \*\* Source: Reuters



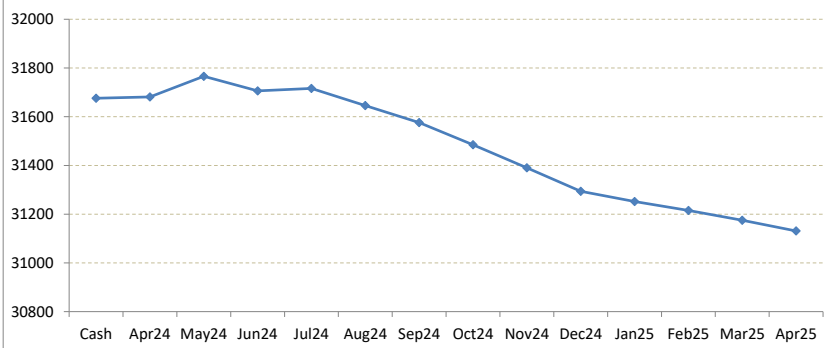
# LME Valuation - Tin

Cash - 3M: 13.00c

Date: 2024-04-11

<b>Cash</b>	<b>31676.00</b>	Cash-Apr24	Cash-May24	Cash-Jun24	Cash-Jul24	Cash-Aug24	Cash-Sep24	Cash-Oct24	Cash-Nov24	Cash-Dec24	Cash-Jan25	Cash-Feb25	Cash-Mar25
<b>3M</b>	<b>31689.00</b>	5.00c	90.00c	30.00c	40.00c	30.00b	100.00b	191.00b	286.00b	382.00b	424.00b	461.00b	501.00b
Apr24	<b>31681.00</b>												
May24	<b>31766.00</b>	Apr24-3M	May24-3M	Jun24-3M	3M-Jul24	3M-Aug24	3M-Sep24	3M-Oct24	3M-Nov24	3M-Dec24	3M-Jan25	3M-Feb25	3M-Mar25
Jun24	<b>31706.00</b>	8.00c	77.00b	17.00b	27.00c	43.00b	113.00b	204.00b	299.00b	395.00b	437.00b	474.00b	514.00b
Jul24	<b>31716.00</b>												
Aug24	<b>31646.00</b>	Apr24-May24	May24-Jun24	Jun24-Jul24	Jul24-Aug24	Aug24-Sep24	Sep24-Oct24	Oct24-Nov24	Nov24-Dec24	Dec24-Jan25	Jan25-Feb25	Feb25-Mar25	Mar25-Apr25
Sep24	<b>31576.00</b>	85.00c	60.00b	10.00c	70.00b	70.00b	91.00b	95.00b	96.00b	42.00b	37.00b	40.00b	44.00b
Oct24	<b>31485.00</b>												
Nov24	<b>31390.00</b>	May24	Jun24	Jul24	Aug24	Sep24	Oct24	Nov24	Dec24	Jan25	Feb25	Mar25	Apr25
Dec24	<b>31294.00</b>	85.00c	25.00c	35.00c	35.00b	105.00b	196.00b	291.00b	387.00b	429.00b	466.00b	506.00b	550.00b
Jan25	<b>31252.00</b>	May24	60.00b	50.00b	120.00b	190.00b	281.00b	376.00b	472.00b	514.00b	551.00b	591.00b	635.00b
Feb25	<b>31215.00</b>	Jun24	10.00c	60.00b	130.00b	221.00b	316.00b	412.00b	454.00b	491.00b	531.00b	575.00b	
Mar25	<b>31175.00</b>	Jul24	70.00b	140.00b	231.00b	326.00b	422.00b	464.00b	501.00b	541.00b	585.00b		
Apr25	<b>31131.00</b>	Aug24	70.00b	161.00b	256.00b	352.00b	394.00b	431.00b	471.00b	515.00b			
		Sep24	91.00b	186.00b	282.00b	324.00b	361.00b	401.00b	445.00b				
		Oct24	95.00b	191.00b	233.00b	270.00b	310.00b	354.00b					
		Nov24	96.00b	138.00b	175.00b	215.00b	259.00b						
		Dec24	42.00b	79.00b	119.00b	163.00b							
		Jan25	37.00b	77.00b	121.00b								
		Feb25	40.00b	84.00b									
		Mar25	44.00b										
		Apr25											

Forward Curve



\*본 자료는 LME에서 공시하는 Valuation을 토대로 작성된 것으로 실제 거래 시의 스프레드와는 무관합니다.  
 \*\* Source: Reuters

